

Quick Start Guide

PCS-Boom Connector (185801)

Thank you for choosing the Rycote PCS-Boom Connector! This guide provides you with the basics to get you started.

Optional attachments

The following attachments are available for the PCS-Boom Connector:

- **Pair of 3/8" Tips**
for PCS-Boom Connector (185805)
- **Classic Adaptor**
for PCS-Boom Connector (185807)
- **Cyclone Adaptor**
for PCS-Boom Connector (185808)

Full details about this product are available on our website: rycote.com/microphone-windshield-shock-mount/pcs-boom-range/



1
Screw the PCS-Boom Connector on to the male 3/8" thread of the boom pole, in a clockwise rotation/direction - to the desired position.



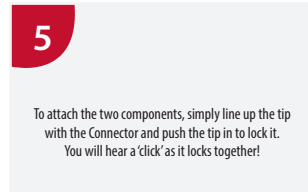
2
Use the included hex/Allen key to tighten the two small locking screws on the PCS-Boom Connector. This will lock it on to the 3/8" boom pole thread, without damaging it.



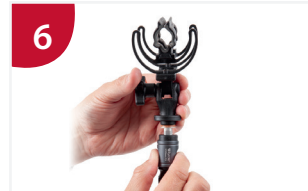
3
Screw the PCS 'tip' into the female 3/8" thread of your windshield, shock mount, or other accessory that you would like to use with your PCS-Boom Connector.



4
To tighten connection, use a screw driver (not supplied), and insert this through the circular hole in the tip, as shown. Turn clockwise to tighten firmly (do not over-tighten).



5
To attach the two components, simply line up the tip with the Connector and push the tip in to lock it. You will hear a 'click' as it locks together!



6
To release, pull down the grey outer collar on the PCS-Boom Connector, as shown.

PCS-Boom Connector



Quick Start Guide
PCS-Boom Connector

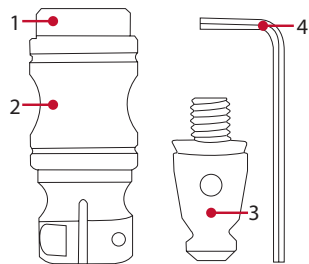
Overview

The Professional Connection System ('PCS') is the ingenious quick attach and release system from Rycote.

The PCS-Boom Connector, has been designed for professional boom pole use. Simply attach the Connector to any 3/8" threaded boom pole, and affix the included 3/8" male 'tip' to the microphone's shock-mount or windshield.

Intuitive, one handed 'click-in' attachment and pull collar release mechanism, provides fast and incredibly easy operation and a rock-solid, noise-free connection in use.

Product View



1. PCS-Boom Connector
2. Grey outer collar
3. 3/8" Tip
4. Hex/Allen Key

Care of your PCS-Boom Connector

- Always store the PCS-Boom Connector ('PCS') for longer periods of time without a tip attached.
- If the PCS is locked without the tip inserted, pull back the collar and push the tip in as usual.
- Always keep the PCS dry and clean.
- Clean PCS with compressed air or distilled water only.
- Tested operating temperature - 20C to + 70C
- Max load when new = 100N (equivalent to 10kg in fixed position). Max load will increase over time.
- Do not open the PCS-Boom Connector itself. The warranty becomes void if the PCS has been opened.
- When working close to the sea, a small drop of silicon grease on the tip of the thread of the two locking screws can help prevent the natural process of galvanic corrosion between the aluminium base and the steel screws.
- If working near to the sea, at the end of each working day it is recommended to clean the PCS, together with the rest of your mechanical equipment, with plenty of distilled water.
- PCS is tested to withstand the equivalent wear of 10+ years of normal use. However, the mechanism relies heavily on the PCS tip being in good condition/order. If your PCS doesn't work as smoothly as it should, please check the condition of the tip, and replace it if required.

 **Rycote**[®]

Trusted by Professionals

Rycote Microphone Windshields Ltd

Libby's Drive, Slad Road, Stroud, Glos, GL5 1RN, U.K.

Email: tech_support@rycote.com

Web: rycote.com

Tel: +44 (0) 1453 759338

10/2018